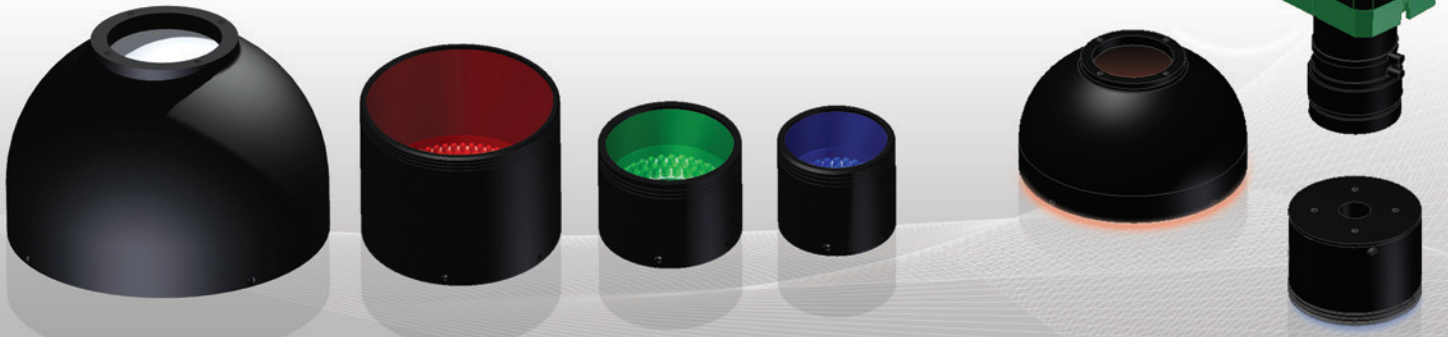


## INDIRECT LIGHTING - DOME LIGHTS

**IDM2 / IDM3 / IDM4 Series** 면발광 - 돔형 무영조명

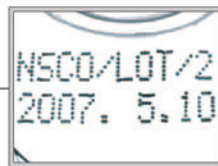
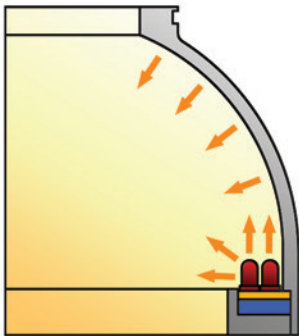
## 평면 상태로 광택이 있는 물체에 검사

약간의 굴절이 있고 표면에 광택이 있는 물체의 문자 검사와 금속 표면을 균일하게 비추는 용도로 최적



## 돔형태의 조사를 자유롭게 조정 가능 (IDM3)

내부 도광 조사용 LED로 3차원 곡면 상태의 도광 재료 내부로 광을 반사시켜 내부 전체에 빛이 충만하게 하여 물체에 어두운 부분을 제거 시킴

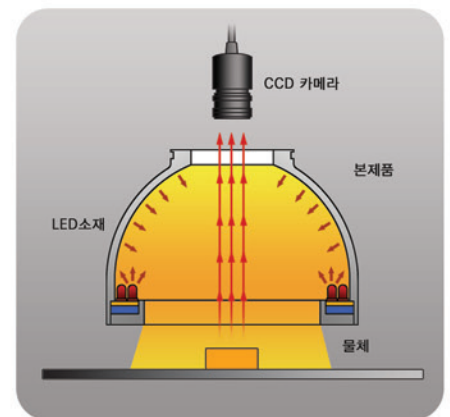


캔음료 알루미늄 팩의 일부인 각인 문자의 촬영

표면에 굴곡이 있어 일반적으로 촬영하기 어려운 물체가 있으나 전 방향으로부터 완전히 어두운 부분이 없는 균일한 조사에 의해 어두워 지거나 LED자체가 찍히지 않고 문자만을 강조할 수 있습니다.

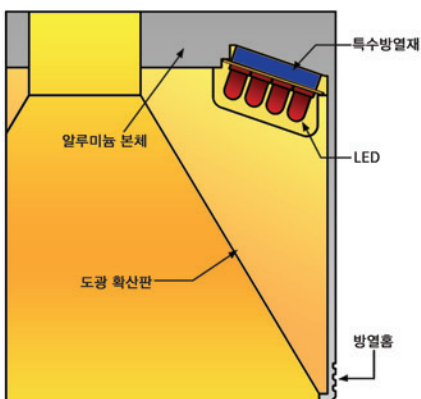
## 조사구조

Illumination Structure



## 전방향으로 고르게 발광 (IDM2)

발열 구조를 채용하여 LED 발열에 의한 온도상승을 억제하고 휘도 노화를 절감



## Application Sample image



커피캔 마개부분  
링조명 - 난반사



커피캔 마개부분  
돔조명 - 최적



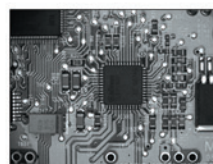
랩 커버  
링조명 - 난반사



랩 커버  
대형 링조명, 돔조명-최적



PCB기판  
링조명 - 난반사



PCB기판  
돔조명 - 최적



휴대폰 키패드  
링조명 - 난반사



휴대폰 키패드  
돔조명 - 최적

## LV-IDM SERIES - Dome Lights

▶ 분류 : 면발광 / 동형 무영조명 / IDM시리즈

Model Name	LV-IDM2-46R						전압옵션	LED수	
컬러 옵션	RD	IR	SW	NW	GR	BL	UV	12V / 24V	48
컬러별 소비전력(W)	1.44	9.6	2.88						

Technical drawing of the LV-IDM2-46R dome light. The drawing includes a top view and a side view. The top view shows a circular dome with a 90° angle between the top and the base, and a 45° angle between the top and the base. The base has a diameter of 28mm (φ28) and a 4-M3 Tap DP 5. The side view shows a cylindrical body with a diameter of 46mm (φ46) and a height of 40mm. The base has a diameter of 40mm (φ40) and a height of 3.5mm. The top view also shows a 45° angle between the top and the base.

Model Name	LV-IDM2-56R						전압옵션	LED수	
컬러 옵션	RD	IR	SW	NW	GR	BL	UV	12V / 24V	60
컬러별 소비전력(W)	1.8	12	3.6						

Technical drawing of the LV-IDM2-56R dome light. The top view shows a circular dome with a 90° angle between the top edge and the mounting base, and a 45° angle between the top edge and the mounting base. The mounting base has four M3 taps (DP 5) spaced 18mm apart. The dome diameter is 38mm. The side view shows the dome height of 18mm, the mounting base diameter of 56mm, and the mounting base height of 3.5mm. The mounting base has a central hole with a diameter of 11mm. The mounting base has a total height of 40mm.

Model Name	LV-IDM2-90R						전압옵션	LED수	
컬러 옵션	RD	IR	SW	NW	GR	BL	UV	12V / 24V	204
컬러별 소비전력(W)	6.12	40.8	12.24						

Technical drawing of the LV-IDM2-90R dome light. The drawing includes a top view and a side view. The top view shows a circular dome with a 90° angle and a 45° angle. The side view shows the dome's profile with dimensions: 16.5 (top width), 74 (dome diameter), 16 (internal diameter), 84 (external diameter), 90 (total height), 3.5 (base thickness), and 70 (base diameter). The drawing also indicates 4-M3 Tap DP 5 mounting holes.

Model Name	LV-IDM3-50R						전압옵션	LED수	
컬러 옵션	RD	IR	SW	NW	GR	BL	UV	12V / 24V	27
컬러별 소비전력(W)	1.62	5.4	1.62						

Technical drawing of the LV-IDM3-50R dome light. The drawing includes a top view and a side view. The top view shows a circular dome with a central mounting hole. The side view shows the dome's profile with a 90-degree angle at the top and a 45-degree angle at the base. The dome is made of polycarbonate (PC) and has a diameter of 50mm. The base is made of aluminum (AL) and has a diameter of 31.5mm. The mounting hole has a diameter of 22mm. The dome is secured with 4 M3 x 0.5 screws. The side view also shows the dome's height of 41mm and the base's height of 15mm. The dome is labeled with 'R25' indicating its radius. The base is labeled with '4-M3 Tap DP 5' indicating the mounting holes. The side view also shows the dome's thickness of 5.5mm. The top view shows the dome's diameter of 50mm and the base's diameter of 31.5mm. The mounting hole has a diameter of 22mm. The dome is secured with 4 M3 x 0.5 screws. The side view also shows the dome's height of 41mm and the base's height of 15mm. The dome is labeled with 'R25' indicating its radius. The base is labeled with '4-M3 Tap DP 5' indicating the mounting holes. The side view also shows the dome's thickness of 5.5mm.

Model Name	LV-IDM3-75R							전압옵션	LED수
컬러 옵션	RD	IR	SW	NW	GR	BL	UV	12V / 24V	90
컬러별 소비전력(W)	2.7	18	5.4						

Technical drawing of the LV-IDM3-75R dome light. The drawing includes a top view and a side view.

**Top View Dimensions:**

- 90° and 45° angles indicating the light beam spread.
- 4-M3 Tap DP 5.0: Mounting holes.
- Ø27: Diameter of the mounting holes.

**Side View Dimensions:**

- 55: Total width of the dome.
- 16: Distance from the mounting holes to the center of the dome.
- Ø36: Diameter of the mounting holes.
- Ø20: Diameter of the mounting holes.
- Ø47.5: Diameter of the dome body.
- Ø75: Total diameter of the dome.
- 5.5: Distance from the mounting holes to the bottom of the dome.
- R37.5: Radius of the dome body.

Model Name	LV-IDM3-100R3							전압옵션	LED수
컬러 옵션	RD	IR	SW	NW	GR	BL	UV	12V / 24V	390
컬러별 소비전력(W)	11.7	78	23.4						

Technical drawing of the LV-IDM3-100R3 dome light. The drawing includes a top view and a side view.

**Top View Dimensions:**

- 90° angle between mounting holes.
- 45° angle between mounting holes.
- 4-M3 Tap DP 5.0 mounting holes.
- Outer diameter:  $\phi 42$ .

**Side View Dimensions:**

- Overall width: 64.
- Mounting hole offset: 16.
- Mounting hole diameter:  $\phi 51$ .
- Mounting hole depth:  $\phi 35$ .
- Mounting hole offset: 62.
- Mounting hole offset: 98.
- Mounting hole offset: 5.5.
- Radius: R49.

## ANNOTATION

- ※ 형식명의 기호 WD는 LED지향특성  $\pm 40^\circ$ 이며 무 기호 시 LED지향특성  $\pm 20^\circ$ 입니다
- ※ 형식명의 기호 RD는 발광색이 적색입니다. / ※ 형식명의 기호 SW는 발광색이 흰색(COOL WHITE)입니다. / ※ 형식명의 기호 GR은 발광색이 녹색입니다.
- ※ 형식명의 기호 BL은 발광색이 파란색입니다. / ※ 형식명의 기호 UV(365/380)는 자외선 조명입니다. / ※ 형식명의 기호 IR(850nm/940nm/700nm 대역)은 적외선 조명입니다.
- ※ 형식명의 기호 NW는 발광색이 흰색(NATURAL WHITE)입니다.



## LV-IDM SERIES - Dome Lights

분류 : 면발광 / 동형 무영조명 / IDM시리즈

Model Name	LV-IDM3-100R							전압옵션	LED수
컬러 옵션	RD	IR	SW	NW	GR	BL	UV	12V / 24V	108
컬러별 소비전력(W)	3.24	21.6	6.48						

Technical drawing of the LV-IDM3-100R dome light, showing top and side views with dimensions.

**Top View Dimensions:**

- Beam angle: 90° (indicated by a dashed line and 45° segments)
- Mounting holes: 4-M3 Tap DP 5.0
- Outer diameter: 64
- Inner diameter: 16
- Mounting hole diameter:  $\phi 4.2$

**Side View Dimensions:**

- Overall height: 51
- Mounting flange thickness: 35
- Mounting flange outer diameter:  $\phi 51$
- Mounting flange inner diameter:  $\phi 35$
- Mounting flange outer diameter:  $\phi 70.5$
- Mounting flange inner diameter:  $\phi 98$
- Mounting flange thickness: 5.5
- Mounting flange outer diameter:  $\phi 98$
- Mounting flange inner diameter:  $\phi 70.5$
- Mounting flange thickness: 5.5
- Mounting flange outer diameter:  $\phi 98$
- Mounting flange inner diameter:  $\phi 70.5$
- Mounting flange thickness: 5.5
- Mounting flange outer diameter:  $\phi 98$
- Mounting flange inner diameter:  $\phi 70.5$
- Mounting flange thickness: 5.5
- Mounting flange outer diameter:  $\phi 98$
- Mounting flange inner diameter:  $\phi 70.5$
- Mounting flange thickness: 5.5
- Mounting flange outer diameter:  $\phi 98$
- Mounting flange inner diameter:  $\phi 70.5$
- Mounting flange thickness: 5.5
- Mounting flange outer diameter:  $\phi 98$
- Mounting flange inner diameter:  $\phi 70.5$
- Mounting flange thickness: 5.5
- Mounting flange outer diameter:  $\phi 98$
- Mounting flange inner diameter:  $\phi 70.5$
- Mounting flange thickness: 5.5
- Mounting flange outer diameter:  $\phi 98$
- Mounting flange inner diameter:  $\phi 70.5$
- Mounting flange thickness: 5.5
- Mounting flange outer diameter:  $\phi 98$
- Mounting flange inner diameter:  $\phi 70.5$
- Mounting flange thickness: 5.5
- Mounting flange outer diameter:  $\phi 98$
- Mounting flange inner diameter:  $\phi 70.5$
- Mounting flange thickness: 5.5
- Mounting flange outer diameter:  $\phi 98$
- Mounting flange inner diameter:  $\phi 70.5$
- Mounting flange thickness: 5.5
- Mounting flange outer diameter:  $\phi 98$
- Mounting flange inner diameter:  $\phi 70.5$
- Mounting flange thickness: 5.5
- Mounting flange outer diameter:  $\phi 98$
- Mounting flange inner diameter:  $\phi 70.5$
- Mounting flange thickness: 5.5
- Mounting flange outer diameter:  $\phi 98$
- Mounting flange inner diameter:  $\phi 70.5$
- Mounting flange thickness: 5.5
- Mounting flange outer diameter:  $\phi 98$
- Mounting flange inner diameter:  $\phi 70.5$
- Mounting flange thickness: 5.5
- Mounting flange outer diameter:  $\phi 98$
- Mounting flange inner diameter:  $\phi 70.5$
- Mounting flange thickness: 5.5
- Mounting flange outer diameter:  $\phi 98$
- Mounting flange inner diameter:  $\phi 70.5$
- Mounting flange thickness: 5.5
- Mounting flange outer diameter:  $\phi 98$
- Mounting flange inner diameter:  $\phi 70.5$
- Mounting flange thickness: 5.5
- Mounting flange outer diameter:  $\phi 98$
- Mounting flange inner diameter:  $\phi 70.5$
- Mounting flange thickness: 5.5
- Mounting flange outer diameter:  $\phi 98$
- Mounting flange inner diameter:  $\phi 70.5$
- Mounting flange thickness: 5.5
- Mounting flange outer diameter:  $\phi 98$
- Mounting flange inner diameter:  $\phi 70.5$
- Mounting flange thickness: 5.5
- Mounting flange outer diameter:  $\phi 98$
- Mounting flange inner diameter:  $\phi 70.5$
- Mounting flange thickness: 5.5
- Mounting flange outer diameter:  $\phi 98$
- Mounting flange inner diameter:  $\phi 70.5$
- Mounting flange thickness: 5.5
- Mounting flange outer diameter:  $\phi 98$
- Mounting flange inner diameter:  $\phi 70.5$
- Mounting flange thickness: 5.5
- Mounting flange outer diameter:  $\phi 98$
- Mounting flange inner diameter:  $\phi 70.5$
- Mounting flange thickness: 5.5
- Mounting flange outer diameter:  $\phi 98$
- Mounting flange inner diameter:  $\phi 70.5$
- Mounting flange thickness: 5.5
- Mounting flange outer diameter:  $\phi 98$
- Mounting flange inner diameter:  $\phi 70.5$
- Mounting flange thickness: 5.5
- Mounting flange outer diameter:  $\phi 98$
- Mounting flange inner diameter:  $\phi 70.5$
- Mounting flange thickness: 5.5
- Mounting flange outer diameter:  $\phi 98$
- Mounting flange inner diameter:  $\phi 70.5$
- Mounting flange thickness: 5.5
- Mounting flange outer diameter:  $\phi 98$
- Mounting flange inner diameter:  $\phi 70.5$
- Mounting flange thickness: 5.5
- Mounting flange outer diameter:  $\phi 98$
- Mounting flange inner diameter:  $\phi 70.5$
- Mounting flange thickness: 5.5
- Mounting flange outer diameter:  $\phi 98$
- Mounting flange inner diameter:  $\phi 70.5$
- Mounting flange thickness: 5.5
- Mounting flange outer diameter:  $\phi 98$
- Mounting flange inner diameter:  $\phi 70.5$
- Mounting flange thickness: 5.5
- Mounting flange outer diameter:  $\phi 98$
- Mounting flange inner diameter:  $\phi 70.5$
- Mounting flange thickness: 5.5
- Mounting flange outer diameter:  $\phi 98$
- Mounting flange inner diameter:  $\phi 70.5$
- Mounting flange thickness: 5.5
- Mounting flange outer diameter:  $\phi 98$
- Mounting flange inner diameter:  $\phi 70.5$
- Mounting flange thickness: 5.5
- Mounting flange outer diameter:  $\phi 98$
- Mounting flange inner diameter:  $\phi 70.5$
- Mounting flange thickness: 5.5
- Mounting flange outer diameter:  $\phi 98$
- Mounting flange inner diameter:  $\phi 70.5$
- Mounting flange thickness: 5.5
- Mounting flange outer diameter:  $\phi 98$
- Mounting flange inner diameter:  $\phi 70.5$
- Mounting flange thickness: 5.5
- Mounting flange outer diameter:  $\phi 98$
- Mounting flange inner diameter:  $\phi 70.5$
- Mounting flange thickness: 5.5
- Mounting flange outer diameter:  $\phi 98$
- Mounting flange inner diameter:  $\phi 70.5$
- Mounting flange thickness: 5.5
- Mounting flange outer diameter:  $\phi 98$
- Mounting flange inner diameter:  $\phi 70.5$
- Mounting flange thickness: 5.5
- Mounting flange outer diameter:  $\phi 98$
- Mounting flange inner diameter:  $\phi 70.5$
- Mounting flange thickness: 5.5
- Mounting flange outer diameter:  $\phi 98$
- Mounting flange inner diameter:  $\phi 70.5$
- Mounting flange thickness: 5.5
- Mounting flange outer diameter:  $\phi 98$
- Mounting flange inner diameter:  $\phi 70.5$
- Mounting flange thickness: 5.5
- Mounting flange outer diameter:  $\phi 98$
- Mounting flange inner diameter:  $\phi 70.5$
- Mounting flange thickness: 5.5
- Mounting flange outer diameter:  $\phi 98$
- Mounting flange inner diameter:  $\phi 70.5$
- Mounting flange thickness: 5.5
- Mounting flange outer diameter:  $\phi 98$
- Mounting flange inner diameter:  $\phi 70.5$
- Mounting flange thickness: 5.5
- Mounting flange outer diameter:  $\phi 98$
- Mounting flange inner diameter:  $\phi 70.5$
- Mounting flange thickness: 5.5
- Mounting flange outer diameter:  $\phi 98$
- Mounting flange inner diameter:  $\phi 70.5$
- Mounting flange thickness: 5.5
- Mounting flange outer diameter:  $\phi 98$
- Mounting flange inner diameter:  $\phi 70.5$
- Mounting flange thickness: 5.5
- Mounting flange outer diameter:  $\phi 98$
- Mounting flange inner diameter:  $\phi 70.5$
- Mounting flange thickness: 5.5
- Mounting flange outer diameter:  $\phi 98$
- Mounting flange inner diameter:  $\phi 70.5$
- Mounting flange thickness: 5.5
- Mounting flange outer diameter:  $\phi 98$
- Mounting flange inner diameter:  $\phi 70.5$
- Mounting flange thickness: 5.5
- Mounting flange outer diameter:  $\phi 98$
- Mounting flange inner diameter:  $\phi 70.5$
- Mounting flange thickness: 5.5
- Mounting flange outer diameter:  $\phi 98$
- Mounting flange inner diameter:  $\phi 70.5$
- Mounting flange thickness: 5.5
- Mounting flange outer diameter:  $\phi 98$
- Mounting flange inner diameter:  $\phi 70.5$
- Mounting flange thickness: 5.5
- Mounting flange outer diameter:  $\phi 98$
- Mounting flange inner diameter:  $\phi 70.5$
- Mounting flange thickness: 5.5
- Mounting flange outer diameter:  $\phi 98$
- Mounting flange inner diameter:  $\phi 70.5$
- Mounting flange thickness: 5.5
- Mounting flange outer diameter:  $\phi 98$
- Mounting flange inner diameter:  $\phi 70.5$
- Mounting flange thickness: 5.5
- Mounting flange outer diameter:  $\phi 98$
- Mounting flange inner diameter:  $\phi 70.5$
- Mounting flange thickness: 5.5
- Mounting flange outer diameter:  $\phi 98$
- Mounting flange inner diameter:  $\phi 70.5$
- Mounting flange thickness: 5.5
- Mounting flange outer diameter:  $\phi 98$
- Mounting flange inner diameter:  $\phi 70.5$
- Mounting flange thickness: 5.5
- Mounting flange outer diameter:  $\phi 98$
- Mounting flange inner diameter:  $\phi 70.5$
- Mounting flange thickness: 5.5
- Mounting flange outer diameter:  $\phi 98$
- Mounting flange inner diameter:  $\phi 70.5$
- Mounting flange thickness: 5.5
- Mounting flange outer diameter:  $\phi 98$
- Mounting flange inner diameter:  $\phi 70.5$
- Mounting flange thickness: 5.5
- Mounting flange outer diameter:  $\phi 98$
- Mounting flange inner diameter:  $\phi 70.5$
- Mounting flange thickness: 5.5
- Mounting flange outer diameter:  $\phi 98$
- Mounting flange inner diameter:  $\phi 70.5$
- Mounting flange thickness: 5.5
- Mounting flange outer diameter:  $\phi 98$
- Mounting flange inner diameter:  $\phi 70.5$
- Mounting flange thickness: 5.5
- Mounting flange outer diameter:  $\phi 98$
- Mounting flange inner diameter:  $\phi 70.5$
- Mounting flange thickness: 5.5
- Mounting flange outer diameter:  $\phi 98$
- Mounting flange inner diameter:  $\phi 70.5$
- Mounting flange thickness: 5.5
- Mounting flange outer diameter:  $\phi 98$
- Mounting flange inner diameter:  $\phi 70.5$
- Mounting flange thickness: 5.5
- Mounting flange outer diameter:  $\phi 98$
- Mounting flange inner diameter:  $\phi 70.5$
- Mounting flange thickness: 5.5
- Mounting flange outer diameter:  $\phi 98$
- Mounting flange inner diameter:  $\phi 70.5$
- Mounting flange thickness: 5.5
- Mounting flange outer diameter:  $\phi 98$
- Mounting flange inner diameter:  $\phi 70.5$
- Mounting flange thickness: 5.5
- Mounting flange outer diameter:  $\phi 98$
- Mounting flange inner diameter:  $\phi 70.5$
- Mounting flange thickness: 5.5
- Mounting flange outer diameter:  $\phi 98$
- Mounting flange inner diameter:  $\phi 70.5$
- Mounting flange thickness: 5.5
- Mounting flange outer diameter:  $\phi 98$
- Mounting flange inner diameter:  $\phi 70.5$
- Mounting flange thickness: 5.5
- Mounting flange outer diameter:  $\phi 98$
- Mounting flange inner diameter:  $\phi 70.5$
- Mounting flange thickness: 5.5
- Mounting flange outer diameter:  $\phi 98$
- Mounting flange inner diameter:  $\phi 70.5$
- Mounting flange thickness: 5.5
- Mounting flange outer diameter:  $\phi 98$
- Mounting flange inner diameter:  $\phi 70.5$
- Mounting flange thickness: 5.5
- Mounting flange outer diameter:  $\phi 98$
- Mounting flange inner diameter:  $\phi 70.5$
- Mounting flange thickness: 5.5
- Mounting flange outer diameter:  $\phi 98$
- Mounting flange inner diameter:  $\phi 70.5$
- Mounting flange thickness: 5.5
- Mounting flange outer diameter:  $\phi 98$
- Mounting flange inner diameter:  $\phi 70.5$
- Mounting flange thickness: 5.5
- Mounting flange outer diameter:  $\phi 98$
- Mounting flange inner diameter:  $\phi 70.5$
- Mounting flange thickness: 5.5
- Mounting flange outer diameter:  $\phi 98$
- Mounting flange inner diameter:  $\phi 70.5$
- Mounting flange thickness: 5.5
- Mounting flange outer diameter:  $\phi 98$
- Mounting flange inner diameter:  $\phi 70.5$
- Mounting flange thickness: 5.5
- Mounting flange outer diameter:  $\phi 98$
- Mounting flange inner diameter:  $\phi 70.5$
- Mounting flange thickness: 5.5
- Mounting flange outer diameter:  $\phi 98$
- Mounting flange inner diameter:  $\phi 70.5$
- Mounting flange thickness: 5.5
- Mounting flange outer diameter:  $\phi 98$
- Mounting flange inner diameter:  $\phi 70.5$
- Mounting flange thickness: 5.5
- Mounting flange outer diameter:  $\phi 98$
- Mounting flange inner diameter:  $\phi 70.5$
- Mounting flange thickness: 5.5
- Mounting flange outer diameter:  $\phi 98$
- Mounting flange inner diameter:  $\phi 70.5$
- Mounting flange thickness: 5.5
- Mounting flange outer diameter:  $\phi 98$
- Mounting flange inner diameter:  $\phi 70.5$
- Mounting flange thickness: 5.5
- Mounting flange outer diameter:  $\phi 98$
- Mounting flange inner diameter:  $\phi 70.5$
- Mounting flange thickness: 5.5
- Mounting flange outer diameter:  $\phi 98$
- Mounting flange inner diameter:  $\phi 70.5$
- Mounting flange thickness: 5.5
- Mounting flange outer diameter:  $\phi 98$
- Mounting flange inner diameter:  $\phi 70.5$
- Mounting flange thickness: 5.5
- Mounting flange outer diameter:  $\phi 98$
- Mounting flange inner diameter:  $\phi 70.5$
- Mounting flange thickness: 5.5
- Mounting flange outer diameter:  $\phi 98$
- Mounting flange inner diameter:  $\phi 70.5$
- Mounting flange thickness: 5.5
- Mounting flange outer diameter:  $\phi 98$
- Mounting flange inner diameter:  $\phi 70.5$
- Mounting flange thickness: 5.5
- Mounting flange outer diameter:  $\phi 98$
- Mounting flange inner diameter:  $\phi 70.5$
- Mounting flange thickness: 5.5
- Mounting flange outer diameter:  $\phi 98$
- Mounting flange inner diameter:  $\phi 70.5$
- Mounting flange thickness: 5.5
- Mounting flange outer diameter:  $\phi 98$
- Mounting flange inner diameter:  $\phi 70.5$
- Mounting flange thickness: 5.5
- Mounting flange outer diameter:  $\phi 98$ </

Model Name	LV-IDM3-136R							전압옵션	LED수
컬러 옵션	RD	IR	SW	NW	GR	BL	UV	12V / 24V	132
컬러별 소비전력(W)	3.96	26.4	7.92						

Model Name	LV-IDM4-112R							전압옵션	LED수
컬러 옵션	RD	IR	SW	NW	GR	BL	UV	12V / 24V	66
컬러별 소비전력(W)	1.98	13.2	3.96						

Technical drawing of the LV-IDM4-112R dome light. The top view shows a circular light with a 90° beam angle and a 45° angle. The mounting hole is 4-M3 Tap DP 5.0. The diameter is 93.2mm. The side view shows a dome shape with a height of 42.3mm, a width of 14mm, and a diameter of 51mm. The mounting hole is 35mm. The overall diameter is 112mm. The height of the mounting hole is 6.5mm. The radius of the dome is R42.5.

Model Name	LV-IDM4-135R							전압옵션	LED수
컬러 옵션	RD	IR	SW	NW	GR	BL	UV	12V / 24V	84
컬러별 소비전력(W)	2.52	16.8	5.04						

Technical drawing of the LV-IDM4-135R dome light, showing top and side views with dimensions.

**Top View Dimensions:**

- Beam angle: 90°
- Angle: 45°
- Mounting holes: 4-M3 Tap DP 5.0
- Outer diameter: 113.99
- Inner diameter: 53.1
- Mounting hole diameter: 12
- Outer diameter of mounting flange: 56
- Inner diameter of mounting flange: 37.4
- Outer diameter of main body: 135
- Inner diameter of main body: 37.4
- Mounting hole diameter: 5
- Radius: R55

**Side View Dimensions:**

- Height: 113.99
- Width: 53.1
- Mounting hole diameter: 12
- Outer diameter of mounting flange: 56
- Inner diameter of mounting flange: 37.4
- Outer diameter of main body: 135
- Inner diameter of main body: 37.4
- Mounting hole diameter: 5
- Radius: R55

## ANNOTATION

- ※ 형식명의 기호 WD는 LED지향특성  $\pm 40^\circ$ 이며 무 기호 시 LED지향특성  $\pm 20^\circ$ 입니다
- ※ 형식명의 기호 RD는 발광색이 적색입니다. / ※ 형식명의 기호 SW는 발광색이 흰색(COOL WHITE)입니다. / ※ 형식명의 기호 GR은 발광색이 녹색입니다.
- ※ 형식명의 기호 BL은 발광색이 파란색입니다. / ※ 형식명의 기호 UV(365/380)는 자외선 조명입니다. / ※ 형식명의 기호 IR(850nm/940nm/700nm 대역)은 적외선 조명입니다.
- ※ 형식명의 기호 YW는 발광색이 흰색(YELLOW WHITE)입니다.