

REVISIONS			
REV.	DESCRIPTION	DATE	APPROVED
X1	INITIAL RELEASE	8/24/15	AG
A	RELEASE PER ECO 15-000995	11/16/2015	AG

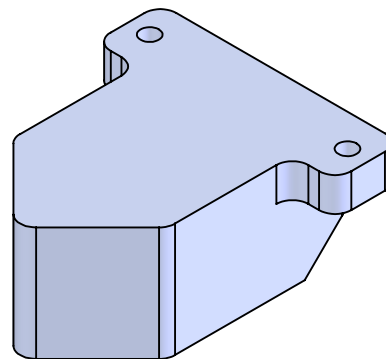
NOTES:

1. UNLESS OTHERWISE SPECIFIED, THIS DRAWING TO BE USED IN CORRELATION WITH SUPPLIED 3D CAD DATA FILE WITH THE SAME NAME AND REVISION AS THIS DRAWING. ALL PART DIMENSIONS, DETAILS, AND FORM ARE TO BE DETERMINED DIRECTLY FROM THE SUPPLIED 3D CAD DATA FILE. HOWEVER, ALL DIMENSIONS AND TOLERANCES ON THIS DRAWING TAKE PRECEDENCE OVER SUPPLIED 3D CAD DATA FILE. THIS DRAWING PROVIDES ADDITIONAL INFORMATION FOR TOOL BUILD AND THE PRODUCTION AND CHECKING OF THIS PART.

2. REMOVE ALL BURRS AND SHARP EDGES.

3. PART TO BE CLEAN AND DRY.

4. ALL MATERIALS, PROCESSES AND FINISHES OF FINAL PRODUCT TO COMPLY WITH EU RoHS DIRECTIVE. EACH HOMOGENOUS MATERIAL NOT TO EXCEED THE MAXIMUM CONCENTRATION VALUE (MCV) FOR RoHS RESTRICTED MATERIALS:  
SUBSTANCE RoHS LIMIT: MCV  
A. LEAD (Pb) < 0.10% = < 1,000PPM  
B. MERCURY (Hg) < 0.10% = < 1,000PPM  
C. HEXAVALENT CHROMIUM (Cr VI) < 0.10% = < 1,000PPM  
D. CADMIUM (Cd) < 0.01% = < 100PPM  
E. POLYBROMINATED BIPHENYL (PBB) < 0.10% = < 1,000PPM  
F. POLYBROMATED DIPHENYL ETHER (PBDE) < 0.10% = < 1,000PPM  
VENDOR TO PROVIDE CERTIFICATE OF COMPLIANCE FOR ALL MATERIALS, PROCESSES AND FINISHES OF FINAL PRODUCT.



<div>PROPRIETARY AND CONFIDENTIAL</div> <div>© 2013 COGNEX CORP. ALL RIGHTS RESERVED. THIS DOCUMENT IS PROPRIETARY TO COGNEX CORP., NATICK, MA AND MAY NOT BE USED IN ANYWAY, DISCLOSED TO OTHERS, OR REPRODUCED, IN WHOLE OR IN PART, EXCEPT AS EXPRESSLY AUTHORIZED BY COGNEX IN WRITING. ANY PERMITTED REPRODUCTION OF THIS DOCUMENT MUST INCLUDE THIS NOTICE.</div>	<div>DIMENSIONS</div> <div>UNLESS OTHERWISE SPECIFIED, DIMENSIONS ARE IN</div> <div>MILLIMETERS[INCHES].</div>		NAME	DATE	COGNEX		NATICK, MA 01760	
		DRAWN	A. GOODALE	8/24/15	TITLE:			
		CHECKED	-	-	FLAT SURFACE MOUNT			
	<div>TOLERANCES</div> <div>X.X[X.XX]: ± 0.25[.010]</div> <div>X.XX[X.XXX]: ± 0.13[.005]</div> <div>ANGULAR: ± .5°</div>	MFG APPR.	-	-	Merlin Vision			
		MATERIAL	AL 6061-T6			DWG. NO.		REV
	<div>GEOMETRIC TOLERANCES PER ASME Y14.5M-1994</div>	FINISH	BLACK ANNODIZED			371-10060R		A
			SIZE		B	SCALE: 1:1	SHEET 1 OF 1	